



GREENGONDWANA FARMER PRODUCER COMPANY LTD.

CIN. No. : U01100MH2020PTC352786 Date - 30/12/2020 UDYAM Reg. No. : UDYAM-MH-10-0003942

Head Office - C/o Rajendra Dadaji Khobragade, At Post. Shioni Bk. Tah. Armori, Dist. Gadchiroli, 441208 (M.S.)

Branch Office - V2 Krushi salla & Seva Kendra, C/o Gumphawar Sir, Near Vivekanand School, Armori Dist - Gadchiroli (M.S.)

7774981538, 8605127514, 8605071545,

greengondwanafpo@gmail.com

RFQ No.: GGFPC / SMART/Works Tender/102/2022-23

Date: 09/06/2023

Ref. No.

Date.

Corrigendum/Amendment No. 2 Date Extension

Sub: Proposed Construction Work For Construction Of Machine Shade 185.80 Sq M With Estimated Approx... Value Of Rs. 32.95 Lacs Under SMART Project Regd....

Name Of Project: - Hon. Balasaheb Thackeray Agribusiness And Rural Transformation (SMART) Project

Name Of CBO :- Green Gondwana Farmer Producer Company Ltd, At.Shivni, Tq- Armori, Dist- Gadchiroli

Name Of Tender:- Invitation For Proposed Construction Work For Construction Of Machine Shade 185.80 Sq M With Estimated Approx... Value Of Rs. 32.95 Lacs Under SMART Project.

Reff. No. :- GGFPC / SMART/Works Tender/89/2022-23 Date: 19/05/2023

Published On Date: - 20/05/2023 SMART Project Website.

Corrigendum No. 1 :- 08/06/2023 on SMART Project Website.

Reason For Amendment: - DUE TO REVISED BOQ WITH PEB STRUCTURED AS DECIDED BY PROCUREMENT COMMITTEE OF OUR CBO, FOR PROPOSED CONSTRUCTION WORK FOR MACHINE SHADE OF AREA 185.80 SQ M WITH ESTIMATED APPROX... VALUE OF RS. 32.95 LACS UNDER SMART PROJECT, SO OLD BOQ IS CANCELLED AS PER THIS AMENDMENT.

Clause No.	Original Clause	Amendment
Tender Notice	Annexure -1 Attached Anne-1 on 08/06/2023 Old BOQ	Annexure - 2 with revised BOQ



President, Procurement Committee

Name: Prashant Darve **Office Address-** Greengondwana Farmer Producer Co Ltd, At.Shivani bk, Tq- Armori, Dist- Gadchiroli
Mob No- 7774981538, greengondwanafpo@gmail.com

BILL OF QUANTITY- Annexure-II

The approximate Bill of Quantities is Indicated is indicated below to give an idea of te work which should be executed in accordance with approved drawing and specification to enable the bidder to furnmish the item rate wise price. Bidder may howevernote that no variation in the Item rate cost are acceptable (except where item are ordered by the Engineer)

Name Of Work :- Construction of Machine Shed for Green Godown Former Producer Company Ltd. At . Shivani BK., Tah-Armori &, Dist. Gadchiroli

No	Item	Quantity	Unit	Unit Rates in Rs. Inclusive of all duties , GST, Other levies etc.		Total Amount
				Figure	Words	
1	3	2	3	4	5	7
1	Excavation for foundation in earth, soil of all types, sand, gravel and soft murum, including removing the excavated material up to a distance of 50 m. beyond the building area and stacking and spreading as directed, dewatering, preparing the bed for the foundation and necessary back filling, ramming, watering including shoring and strutting etc. complete. (Lift upto 1.5 m.) By Mechanical Means					
	0.00 to 1.50 meter	31.58	Cu. Mt			
	1.50 to 3.00 meter	16.20	Cu. Mt			
2	Providing and laying in situ, cement concrete in M-10 of trap/ granite/ quartzite/ gneiss metal for foundation and bedding including bailing out water, formwork, compacting and curing complete, with fully automatic micro processor based PLC with SCADA enabled reversible Drum Type mixer, With natural sand.	15.774	Cubic meter			
3	Providing and laying in situ cement concrete M-20 of trap / granite /quartzite/ gneiss metal for R.C.C. work in foundations like raft, strip foundations, grillage and footings of R.C.C. columns and steel stanchions etc. including bailing out water, formwork, cover blocks compaction and curing roughening the surface if special finish is to be provided (Excluding reinforcement and structural steel) etc. etc. complete, With fully automatic micro processor based PLC with SCADA enabled reversible drum type concrete mixer . With natural sand.	4.460	Cubic meter			

4	Providing and casting in situ cement concrete M-20 of trap / granite /quartzite/ gneiss metal for R.C.C. columns as per detailed designs and drawing or as directed including centering, formwork, cover blocks compaction finishing the formed surfaces with cement mortar 1:3 of sufficient minimum thickness to give a smooth and even surface or roughening if special finish is to be provided and curing etc. complete. (Excluding reinforcement and structural steel).With fully automatic micro processor based PLC with SCADA enabled reversible drum type concrete mixer With Natural sand.	2.21	Cubic meter			
5	Providing and laying Cast in situ/Ready Mix cement concrete M-20 of trap / granite /quartzite/ gneiss metal for R.C.C. beams and lintels as per detailed designs and drawings or as directed including centering, formwork, cover blocks, laying/pumping, compactionand roughening the surface if special finish is to be provided and curing etc. complete. (Excluding reinforcement and structural steel). with fully automatic micro processor based PLC with SCADA enabled reversible Drum Type mixer/ concrete Batch mix plant (Pan mixer) etc. complete. With natural sand/V.S.I. quality Artificial Sand	11.530	Cubic meter			
6	Providing second class Burnt Brick masonry with conventional/ I.S. type bricks in cement mortar 1:6 in foundations and plinth of inner walls/ in plinth external walls including bailing out water manually , striking joints on unexposed faces, raking out joints on exposed faces and watering etc. Complete.	9.750	Cubic meter			
7	Providing second class Burnt Brick masonry with conventional/ I.S. type bricks in cement mortar 1:6 in superstructure including striking joints, raking out joints, watering and scaffolding etc. Complete	28.38	Cubic meter			

8	<p>Providing and laying Cast in situ/Ready Mix cement concrete M-20 of trap/ granite/ quartzite/ gneiss metal for R.C.C. chajja as per detailed design and drawings including centering, formwork, cover blocks compacting , curing , finishing and roughening the surface if special finish is to be provided and curing complete. (Excluding reinforcement and structural steel).with fully automatic micro processor based PLC with SCADA enabled reversible Drum Type mixer/ concrete Batch mix plant (Pan mixer) etc. complete. With natural sand/V.S.I. quality Artificial Sand</p>	1.15	Cubic meter			
9	<p>Providing and fixing in position TMT / HYSD steel bars reinforcement of various diameters for R.C.C. pile caps, footings, foundations, slabs, beams and columns, canopies, staircases, newels, chajjas, lintels, pardies, coping, fins, arches etc. as per detailed design and drawings and schedules including cutting, bending, hooking the bars, binding with wires or tack welding and supporting as required completed.</p>	1.458	Metric Tonne			
10	<p>Providing and fixing rolling shutter fabricated from steel laths of minimum thickness 0.9 mm with lock plate of 3.15 mm thickness reinforced with 35 x 35 x 5 mm angle section fitted with sliding bolts and handles for both sides, deep M.S. channel section of depth and thickness not less than 65 mm and 3.15 mm respectively with hold fast arrangements, M.S. Bracket plate 300 x 300 x 3.15 mm minimum size and shape with square bar, suspension shaft of minimum 32 mm diameter, hood cover of M.S. sheet not less than 0.9 mm thickness and of any size at top and safety devices including mechanical gear operation arrangement consisting of worm gear wheels and worms of high grade cast iron or mild steel and one coat of red lead primer etc. complete. (I.S. 62481979) (With mechanical gear)</p>	14.76	Square meter			

11	Providing and fixing steel window of various sizes as per detailed drawing without hot dip zinc coating, without ventilators, including fabricating / glazing with plain / obscured glass panels of approved type and quality, iron oxidised fixtures and fastenings, finishing with oil painting two coats complete (with guard bars 12 mm square at 10 cm c/c.)	11.25	Square meter			
12	Providing internal cement plaster 20mm thick in two coats in cement mortar 1:5 without neeru finish, to concrete, brick surface, in all positions including scaffolding and curing etc. complete	145.56	Square meter			
13	Providing internal cement plaster 12mm thick in single coat in cement mortar 1:5 without neeru finish to concrete or brick surfaces, in all positions including scaffolding and curing etc. complete.	142.78	Square meter			
14	Providing internal cement plaster 6 mm thick in a single coat in cement mortar 1:3 without neeru finish to concrete surface in all positions including scaffolding and curing etc. complete.	12.06	Square meter			
15	Providing and applying three coats of water proof cement paint of approved manufacture and of approved colour to new plastered surfaces including scaffolding if necessary, cleaning and preparing the surface, watering for two days etc. complete.	154.84	Square meter			
16	Providing and applying plastic emulsion paint of approved quality, colour and shade to old and new surfaces in two coats including scaffolding, preparing the surface. (excluding the primer coat)etc. complete.	145.56	Square meter			
17	Providing and filling in the foundation with sand of approved quality including watering, compacting etc. complete.	92.69	Cubic meter			
18	Providing soling using 80 mm size trap metal in 15 cm. layer including filling voids with Crushed sand/grit, ramming, watering etc. complete.	28.01	Cubic meter			

19	<p>Providing and laying Cast in situ/Ready Mix cement concrete M-15 of trap/ granite/quartzite/gneiss metal for coping to plinth or parapet, moulded or chamfered as per drawing or as directed including steel centering, plywood/ steel formwork compacting, roughening them if special finish is to be provided, finishing uneven and honeycombed surface and curing etc. complete. The Cement Mortar 1:3 plaster is considered for rendering uneven and honeycombed surface only. Newly laid concrete shall be covered by gunny bag, plastic, tarpaulin etc. (Wooden centering will not be allowed.) With fine aggregate (Natural Sand / Crushed sand VSI Grade finely washed etc)</p>	1.16	Cubic meter			
20	<p>Providing structural steel work in trusses, other similar trussed purlins and members with all bracing, gusset plates etc. as per detailed designs and drawings or as directed including cutting, fabricating, hoisting, erecting fixing in position, Making riveted/ bolted/ welded connection and one coat of anticorrosive paint and over it 2 coats of oil painting approved quality and shade etc. complete.</p>	4.741	Metric tonne			
21	<p>Providing and fixing self supporting steel roofing system (Proflex) for a Godown or alike made up of structural grade steel sheet of 912 millimeter width (tolerance +/- 2 millimeter), moulded at site using mechanical press dies to the desired curve and shape to form 605 millimeter wide interlocking panels . The interlocking panels shall be pressed to close the seam forming water tight joints for a span of 15.30 meter having arch rise as 3.06 meter, arch length 17.75 meter. The base material made up of imported galvalume steel complying to ASTM A792 having base metal thickness of 0.80 millimeter (tolerace + / - 0.02 millimeter) with alloy coating AZ 150 and paint coating of regular modified polyster , top coat 25 micron and bottom coat 12 micron as per approved colour , including fixing hangers , clamps etc.as may be necessary of Proflex standard, including fixing sky light of 2 millimeter thick polycarbonate sheet of size 2' x 7' and turbo ventilator of 24" diameter to be installed at every 30 feet along the length of roof including finishing, testing and cleaning etc. complete.</p>	216.20	Sqaure meter			

22	Providing and fixing valley gutter of 22 B.W.G. (0.8 mm) plain galvanised iron sheets 90 cm wide with teak wood planking 20 mm thick including two coats of coal-tarring the upper surface of plank etc. complete. (excluding painting to underside of plank).	24.36	Running meter			
23	Providing and fixing P.V.C. Rain water pipes of 110mm outer diameter and having wall thickness of 2.2 to 2.7 mm conforming to I.S. 13592-1992 including proper rainwater receiving recess with P.V.C. plug, bend, necessary fittings, such as, offsets, shoes, including fixing the pipe on wall using approved wooden cleats projecting 25mm to 40mm from face of wall a fixing with clips of approved quality and number ,filing the joint using rubber gasket with solvent cement and properly resting the shoe of pipes on C.C. or masonry blocks, including necessary scaffolding and maintenance for 3 yrs for any leakages or dislocations of pipes. All the P.V.C. fittings and additional 2 piece socket clips shall be got approved from engineer in charge etc. complete. (The contractor shall give 3 yrs guarantee bond for payment)	14.52	Running meter			
24	Providing and fixing corrugated galvanised iron sheets of 0.63mm thick (24 B.W.G.) for roofing without wind tiles including fastening with galvanised iron screws and bolts, lead and bitumen washers as per drawing etc. complete.(Weight of 5.5 kg/sq.m.).	215.22	Square meter			
25	Providing and laying cement concrete flooring 40 mm thick with M15 cement concrete laid to proper level and slope in alternate bays including compaction, filling joints, marking lines to give the appearance of tiles of 30 cm x 30 cm or other size laid diagonally/ square etc finishing smooth (with extra cement) in any colour as directed and curing etc. complete. With Crushed Sand.	173.46	Square meter			
26	Providing Royalty Charges					
	Sand	41.55	Cubic meter			
	Metal Murum other than Sand	120.70	Cubic meter			

27	Testing of Materail				
	a. Bricks Test - Water absorption and crushing strength	1 Test			
	b. M 20 Cement Concret compressive test	5 Test			
	c. Steel Bar Tensile, % elongation wt per mt,bend rebend etc	1 Test			
	d. Basic test of Cement- Std consistency, fineness etc	1 Test			
	e. Basic Tests of Aggregates- Water Absorption, sp gr etc	1 Test			
	f. Sand- Fine Aggregates , Sieve analysys, silt & clay content etc.	1 Test			
	g. Murum- 1. Sieve analysis	1 Test			
	2. Plasticity Index	1 Test			
28	Supplying, erecting& terminating XLPE armored cable 3 core 6 sq. mm. copper conductor continuous 5.48 sq. mm. (12 SWG) G.I. earth wire complete erected with glands & lugs, on wall/ trusses/ pole or laid in provided trench/ pipe as per specification no. CB-LT/CU	30.00	Running meter		
29	Making trench of suitable width and depth in hard murum / tar road for laying provided LT cable up to and including 16 sq. mm complete as per specification no. CW-EXNCTR	30.00	Running meter		
30	Making trench of suitable width and depth in soft soil for laying provided LT cable up to and including 16 sq.mm complete as per specification no. CW-EXN-CTR	10.00	Running meter		
31	Supplying & erecting mains PVC unarmored cable 1100Volt grade ISI mark 3 core / 2.5 sq mm stranded / solid copper complete erected on wall with duly painted G. I. Saddle.	130.00	Running meter		
32	Supplying & erecting weatherproof powder coated distribution board 4 way with 2 x 6/10 Amp S. P. M. C. B. with industrial two pin plug socket 10 A and 3 pin plug top 10 A with top cover necessary connection etc complete with approved make.	12.00	Number		
33	Providing point wiring for street light with PVC unarmored cable 1100Volt grade ISI mark 3 core 1.5 sqmm stranded / solid copper erected on wall with G. I. Saddle duly painted @ 0,25 m C/C rigidly grouted in the wall with the help of plated screw including 4" x 4" M. S. box 2 way with epoxy painting &	10.00	Number		

34	Supplying & erecting 10-12W, 230V integral type LED Lamp suitable for B- 22/E-27 base.	8.00	Number			
35	Supplying and erecting LED street light fitting suitable for 20 to 25W, with PF > 0.95 class IP 65 and above housing of pressure die cast aluminum alloy and heat sink extruded aluminum complete as per specification No FG-ODF/FLS	8.00	Number			
36	Supplying and erecting street light Wall bracket made from 40 mm. dia 'B' class G.I. pipe 1.2 m in total length complete as per specification no. FG- BKT/WB	1.00	Number			
37	Providing ear thing with galvanized iron earth plate size 60 x 60 x 0.6 cm complete with all materials, testing & recording the results as per specification no. EA-EP	1.00	Number			
38	Providing pipe type ear thing with 40mm. dia. G.I. pipe or 20 mm dia. G.I. Rod complete with all materials as per specification no. EA-EP	1.00	Number			
39	Supplying, erecting & marking DPMCB 6A to 32A, C-series (for motor/power) in provided distribution board as per specification no. SW-SWR/MCB	1.00	Number			
40	Supplying, erecting& marking SPMCB 6A to 32A, B-series (for lighting) in provided distribution board as per specification no. SW-SWR/MCB	1.00	Number			
41	Supplying and erecting GI sheet 1.6 mm (16 SWG) to be used for fabrication of boxes panel boards etc. including cutting, bending, drilling, welding, riveting etc. and painting with one coat of red lead paint and 2 coats of enamel paint.	1.00	Square meter			
42	Supplying and erecting marine plywood 18/19 mm thick fixed to wall or on provided panel board with necessary materials such as screws, wall fasteners, supports, nut bolts etc. complete.	1.00	Square meter			
43	Supplying and erecting triple pole and neutral distribution board (TPNDB) surface/ flush mounted suitable for SPMCB of 12 ways on iron / GI frame (horizontal bus bar type) as per specification no. SW-SWR/MCBDB	4.00	Number			

44	Supplying & erecting G.I. pipe 'A' class 25 mm dia. erected for enclosing XLPE armored cable on wall/pole as per specification no. CB-CE	20.00	Running meter			
45	Supplying & erecting G.I. pipe 'A' class 40 mm dia. erected for enclosing XLPE armored cable on wall/pole as per specification no. CB-CE	12.00	Running meter			
46	Supplying and laying (including excavation of suitable width & depth upto 90 cm) 75 mm outside dia. double wall corrugated pipes (DWC) of HDPE for enclosing cable below ground/road surface, to required depth complete.	24.00	Running meter			
47	Supplying & erecting 18 gauge M.S. Box powder coated (4"x4") 3 way for mains connection.	8.00	Number			
48	Supplying & erecting Siemens type brass cable glands for 3 to 4 core 6 sq. mm. /2 to 4 core 10 sq. mm. for XLP Earmarked cable as per specification No. CB-GL	6.00	Number			
49	Supplying shockproof type hand lamp with lamp holder, bulb/ lamp 100 W guarded glass and 30 mtr. 3 core PVC flexible cord with hand shield type 3 pin 6 Amp. Plug top.	6.00	Number			
50	Point wiring for independent plug in 20 mm ISI marked HMS PVC conduit with 1.5 sq.mm (2+1E) FRLSH grade copper wire, flush type switch, ear thing and required accessories as per specification No: WG-PW/SW	6.00	Number			
51	Supplying and erecting Street light bracket made from 25 mm. dia 'B' class G.I. Pipe, 0.6 m in length along with pole cap of 300 mm length and 80 mm dia duly welded with provided leads as per specification no. FG-BKT/BPC	8.00	Number			
52	Supplying & erecting mains with 2 x 2.5 Sq.mm stranded copper PVC insulated wire with 2 x 1.5 Sq.mm copper PVC wire in PVC casing - capping 20 mm on wall / ceiling.	8.00	Running meter			
53	Supplying & erecting main with 2 x 4.00 Sq.mm stranded copper PVC insulated wire with 2 x 1.5 Sq.mm copper PVC wire in PVC casing - capping on wall / ceiling.	8.00	Running meter			

54	Supplying and erecting double pole switch surface type/ flush type 240V, 32A with indicator lamp & fuse as per specification no. SW- SWR/BDP.	10.00	Number			
55	Supplying and erecting double pole metal clad switch with HC type fuse and neutral link 240V, 32A on iron / GI frame as per specification no. SW- SWR/MDP ..	8.00	Number			
56	Supplying & erecting 3W, 230V integral type LED Lamp suitable for B- 22/E-27 base.	8.00	Number			
57	Supplying and erecting T8 Fluorescent tube day light 1200mm 36 W	6.00	Number			
58	Supplying & erecting ready to use Retrofit T8 LED 18 / 20 tube light with polycarbonate body, heat sink, integrated HF electronic driver complete & compatible to T8 / T12 LED luminaries by disconnecting starter & ballast if necessary.	8.00	Number			
59	Supplying and erecting regular/ standard model ceiling fan of 900 /1050 mm. sweep complete erected in position as per specification no. FG-FN/CF	10.00	Square meter			
60	Supplying and fixing wire mesh (Jali) cover suitable for fitting / fan or for any purpose, complete with necessary materials. The jali cover shall be made from good quality G.I. wire mesh	8.00	Number			
61	Supplying and erecting ding dong / electronic musical type call bell with heavy duty coil suitable to operate on 230V A.C. supply erected on polished double wooden block/sunmica block of suitable size	6.00	Number			
62	Supplying and erecting street light Wall bracket made from 25 mm. dia 'B' class G.I. pipe 1.2 m in total length complete as per specification no. FG- BKT/WB	6.00	Number			
63	Supplying & erecting CRCA sheet metal one Wayne closures suitable for DP MCB /TP MCB /FP MCB erected on angle iron/GI frame complete.	1.00	Number			
64	Supplying erecting and marking four pole isolators only switch version of miniature circuit breakers of 40A in provided distribution board complete.	1.00	Number			

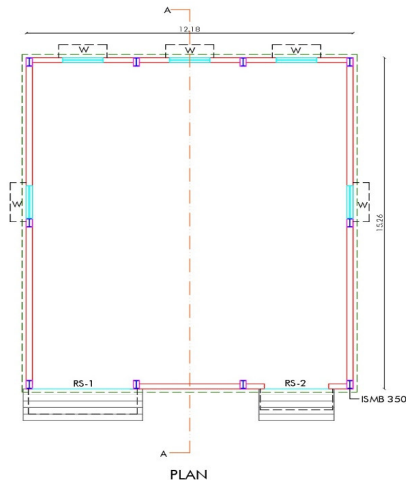
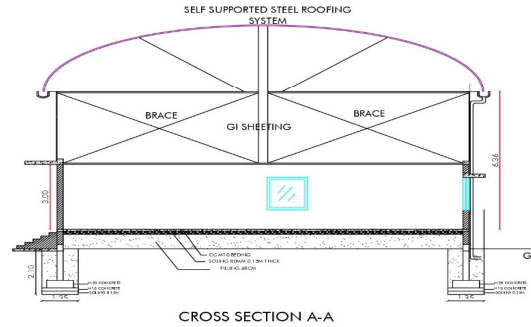
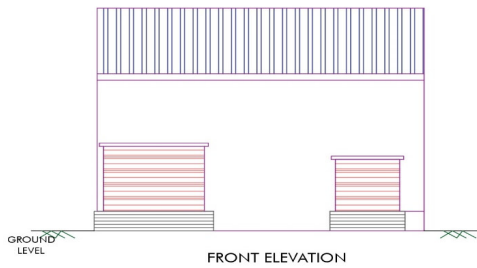
65	Management Strategies and Implementation Plan (MSIP) to manage the Environmental, Social, Health and Safety (ESHS) risks and ESHS Code of Conduct	LUMSUM			
----	---	--------	--	--	--

Note: The total amount mentioned in the form-8 should be same as mentioned in the BOQ.

We agree to execute the works in accordance with the terms and conditions mentioned in the invitation for quotation document, approved drawings and technical specifications at a total fixed contract price of Rs... /- (Rs Only).

Stamp & Signature of Contractor

Proposed Building Plan For Machine Shed for Green Gondwana Farmer Producer Company Ltd. At Shivani Bk. Ta. Armorri Dist. Gadchiroli



S.NO	SYMBOL	SIZE	NO.	PARTICULAR
1	RS-1	3.00x3.00	1	ROLLING SHUTTER
2	RS-2	2.40x2.40	1	ROLLING SHUTTER
3	W	1.50x1.50	5	M.S GLAZED WINDOW

AREA STATEMENT

SHED PLAN AREA = 185.86 SQ.M (2000 SQ.FT)

TOTAL BUILT UP AREA = 185.86 SQ.M (2000 SQ.FT)

COLUMN SIZE = 0.23x0.40M

PROPOSED BUILDING PLAN FOR MACHINE SHADE FOR "GREEN GONDWANA FORMER PRODUCER COMPANY LTD. AT SHIVANI BK. TAH-ARMORI DISTT.- GADCHIROLI

NOTE:- ALL DIMENSIONS ARE IN METRE IN SCALE 1:100

OWNERS SIGNATURE

ENGINEER

ER. HIMANSHU DHAWALE
S.E. CIVIL
YASHODHARA CONSULTANCY SERVICE